



## laser subtitling machine lightningII

**Engraves subtitles directly onto the print  
or on a positive black leader**

### features

- Multi film stock mechanism
- Optimized optical system
- Modular electronic system
- New ultra fast writing head
- New software under Windows
- Adjustable process for black & white backgrounds
- Easy access oriented design
- Direct maintenance on all the parts
- New smoke filtering system running during the subtitling process.

### advantages

- Manufacturer and owner of the product
- Easy access for maintenance
- Robustness and low maintenance
- 15 years of experience – 75 machines around the world
- Direct maintenance on "all" the parts
- Less power loss
- Quick and easy machine handling

Mohamed HOCINE  
Product manager > subtitling



# laser subtitling machine lightningII

## multi film stock mechanism DA50

CTM DEBRIE has made the choice to build a pin and registration pin system. It allows to engrave all kind of film stocks: used or new, with or without shrinkage, with or without splices. Perfect stability and no risk to break the film. Strongly built, fast and perfectly stable drive system, DA50 has proven to be very reliable.

## optimized optical system

If the AOM is common to all the machines of the market, CTM DEBRIE has optimized the optical way. Thanks to new single lenses, the loss in power in the optical system is lower than 25%. With an equal adjustment power, the laser power while engraving is higher. This allows optimizing the life duration of the laser diodes.

## modular electronic system

All the elements are modular. The access and the change are much easier. For eventual upgrade, the intervention is very simple and can be made by the user.

## new ultra fast writing head

Lightning II does not integrate any more a writing head from outside! CTM DEBRIE has developed its own writing head especially conceived for subtitling. This has a double advantage: an increased speed up to 20% (300 subtitles / hour on average, with a maximum speed of 360 subtitles /hour), and no more dependence on subcontractors.

## new option: software titra laser

Engraving software has been totally redesigned. Available under DOS and WINDOWS. All the limitations of the previous software have been corrected (see next page on catalogue: TITRA Laser)

## new option: adjustable process for black & white backgrounds

The machine proposes an option enabling a power pre-set of the laser according to the contrast (white or black zone). The plans will be identified during the spotting, the requested power will be programmed, and the laser power will be automatically adjusted during the engraving.

## easy access oriented design

CTM DEBRIE has made the choice of a design allowing an optimal access. Compared with other more compact machines, the experience shows that the access to optics and the filters for cleaning, to the laser for the diode change and to the electronic charts is important for the users.

## direct maintenance on all the parts

All the parts being manufactured on the same site (no subcontracting), the term of reaction is optimized. Also CTM DEBRIE is approved by the integrated laser manufacturer to ensure maintenance on the laser. For the customer it is the insurance to have only one interlocutor able to manage any type of intervention on the whole

machine including the laser Coherent.



## new smoke filtering system during the subtitling process

A particle filter enables to reject air without the burned emulsion particles. The filters are disposable, which therefore makes the maintenance of this system easier.

## dimensions

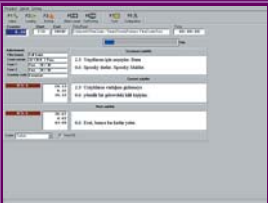
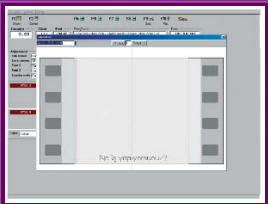
Width: 213 cm  
Depth: 80 cm  
Height: 185 cm  
Weight: 620 kg  
Gross weight: 910 kg  
Power: 220V or 110V single phase  
2,5 kVA, 50 or 60 Hz

## update/upgrade

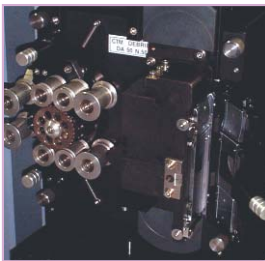
The old generation machines can be updated (new software TITRA), or upgraded (new head, adjustable laser engraving speed).

## options

Model  
Lightning II 16mm kit  
Lightning II 70mm kit  
Titra Laser Software  
Black & White Software



technical range spec.



Etching speed: 300 titles/hour - with max speed of 360 titles/hour  
Rewinding speed: 50 fps  
Formats: 16mm, 35mm, 70mm

Model	Designation
Lightning II	High speed laser subtitling machine

# lightning II

**CTM DEBRIE** thanks all the customers/users of the 75 subtitling units **LIGHTNING II** currently running throughout the world for their confidence.

**CTM DEBRIE: a genuine "manufacturer" of its subtitling machines;** All the elements of the machine - except laser - are developed and manufactured on the site of Gennevilliers by the **CTM DEBRIE** engineers and technicians. All parts of precision mechanics, electronic charts, software etc. are designed and produced within the **CTM DEBRIE** plant. There is not outer subcontracting, thus allowing a faster reactivity from our production Dept and a far better follow-up of the materials.

**CTM DEBRIE: a genuine "utilizer" of its own subtitling machine;** CTM DEBRIE is related to **TITRA FILM** Company, a subtitling laboratory. **TITRA FILM**, which has been using **CTM DEBRIE** subtitling machines for many years, has always been a real test laboratory for the evolution of the machines. Thanks to this relationship between **TITRA FILM** and **CTM DEBRIE** the evolution of the subtitling machine is faster and is technically tested.



# lightning II

