



Vertical version



Horizontal version

Color Analyser Chroma III

New standard of color analyser

features

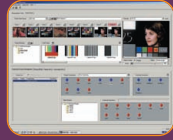
- Unique design with 3CCD with closed loop control system
- Fast and fully automatic alignment
- Galvanometric mirror & Color integrating sphere
- Capstan drive
- Personalized software, written specifically for this machine with frame storage and integrated tools
- Illumination adjustment
- Calibration color control
- Grading accuracy and efficiency

advantages

- Comfort for the operator with great pictures
- Color accuracy
- Compatibility with other existing systems
- Reliability based on over 50 other Color Analysers for over 10 years
- Can be used as an off-line telecine

DIMENSIONS

Width:	160 cm
Depth:	120 cm
Height:	80 cm
Weight:	250 kg
Gross weight:	340 kg
Power:	220V or 110V single phase 2,5 kVA, 50 or 60 Hz



Color Analyser

Chroma III

• UNIQUE CONCEPTION with 3CCD with closed loop control system

Most competitive machines show poor images when faced with dark over-exposed negatives. This is due to a fixed illumination system. 3CCD technology allows **CHROMA III** to maintain constant picture quality regardless of the degree of exposure.

• FAST AND FULLY AUTOMATIC ALIGNMENT

The color control system is highly reliable, and the digital CCD camera is extremely stable. The 3 lamps of the lamp house are automatically stabilized by an opto-electronic closed loop.

• MIRROR & SPHERE Galvanometric mirror & Color integrating sphere

Unlike many other color analyzers, **CHROMA III** does not use an optical prism therefore leaving no optical effect. Diffuse illumination provides a better uniformity of the light thus rendering the quality of picture superior.

• CAPSTAN DRIVE

CHROMA uses servo systems, which employing the smooth continuous-motion of the Capstan drive system. The capstan drive removes the risk of damaging the negative, even if there is a failure, since it is neither necessary to "pull" nor to "push" the film as is the case when mechanical sprockets, or pins, are located in the film sprocket holes. Film can be also driven by sprocket (optional)

RANGE

Model
CHROMA III
delivered with
CHROMA III Remote

TECHNICAL SPECIFICATIONS

Film transport

- Feed and take up capacity: 2000ft (600m)
- Sync speeds NTSC: 24fps
- Sync speed PAL: 25fps, 24fps (option)
- Shuttle speed: 3 x sync speed

Trim control

- 50x0.025Log E steps
- LUT with curve software

Synchronisation

- Biphasic for external sound sync: 25HzPAL, 24Hz NTSC / in option 50, 250 Hz (PAL), 30, 60 Hz (NTSC)
- Serial RS-422 I/O (Sony 9 pin)

• PERSONALLY TAILORED SOFTWARE with frame store and integrated tools

10 bit digital frame storage based on an industrial PC with dual processor, in/out video board and windows based software.

More than 1000 images can be stored on the hard disc.

Drag and drop features enables easy access and overview throughout the process with thumbnail pictures for easy swift identification.

Split screen facility allows comparison between stored and live images at full resolution

RGB parade and histograms display are also available

CHROMA III software is compatible with other software of the market (including INPS)

• CALIBRATION COLOR CONTROL

Though conceptually simple, the system offers two major benefits by varying the brightness and color of lights illuminating the film:

- Laboratory compatibility with color correction values in printer points. Now the DP knows how the film was exposed in internationally compatible units.
- Improved image quality, unlike most color analysers that degrade the picture as the negative gets darker, **CHROMA III** maintains constant signal to noise regardless of the level of negative exposure.



Designation

Color analyser
for 16 / super 16 / 35 / super 35mm
Sync speed, shuttle speed,
RGB, FCC, Fade controls

Imaging system

- 3 CCD camera
- Horizontal resolution: 800 lines
- Steadiness: < 1 line
- Outputs: R,G,B & sync

Color corrector

- RGB exposure control: 50x0.025Log E steps